



You are here: [Home](#) > [News](#) > [Article](#)

DJIA : 8426.66 | Nasdaq : 1538.46

BCI Burke announces Burke Turf surface, lease-to-buy option

Fri Dec 19, 2008 2:38pm EST

[Email](#) | [Print](#) | [Share](#) | [Reprints](#) | [Single Page](#)

[-] Text [+]

FOND DU LAC, Wis.--(Business Wire)-- BCI Burke has announced the addition of a new grass-like playground surface and a new lease-to-buy program to help customers finance new playgrounds.

The new surface, Burke Turf, is designed to combine beauty, durability and safety for the company's full range of playgrounds.

"This is a major addition to our product line, because every playground needs a surface that cushions falls while meeting the needs of our customers for low maintenance, attractive appearance and sound value," said Tim Ahern, president of BCI Burke. Made of polyethylene and monofilament fibers, with nylon thatch layers, it meets the ASTM requirements for a fall of up to 12 feet.

The company also rolled out a new lease-to-own financing option for schools, day care centers and other agencies that need new playgrounds but do not have the capital for the full purchase price.

Under the program, which will be administered by Marlin Leasing, customers will receive approvals within two hours and funds will be available within 24 hours.

"This will be especially helpful for agencies that need to pay for their playgrounds out of ongoing expense budgets rather than capital budgets," said Ahern.

BCI Burke, with headquarters in Fond du Lac, Wisconsin, is a premier manufacturer of commercial playground, park, and recreation equipment and an avid supporter of playground safety. More information is available at www.bciburke.com and www.getintensity.com.

For BCI Burke
Carl Carter, 205-823-3273

Copyright Business Wire 2008

© Thomson Reuters 2009 All rights reserved

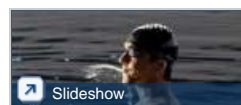
SHARE: [Del.icio.us](#) | [Digg](#) | [Mixx](#) | [My Web](#) | [Facebook](#) | [LinkedIn](#)

ALSO ON REUTERS



MORE PRESS RELEASE

EDITOR'S CHOICE



A selection of our best photos from the past 24 hours. [Slideshow](#)

ONLINE CURRENCY TRADING
CURRENCY TRADING INVOLVES SIGNIFICANT RISK OF LOSS.

CURRENCY FORECAST EUR/USD GO

POUND

USD

FREE PRACTICE ACCOUNT

WWW.FXCM.COM

BUY

MOST POPULAR ON REUTERS

Articles Video

1. Pilot bails out of plane to fake death: report
2. Israeli forces squeeze Gaza | [Video](#)
3. Mariska Hargitay suffers partially collapsed lung
4. Pentagon: 61 ex-Guantanamo inmates return to terrorism
5. Too little, too late for "green" Big 3? | [Video](#)
6. More steps needed to stabilize banks: Bernanke | [Video](#)
7. Vicks VapoRub can harm children under 2
8. No relief for Europe in Russia gas crisis | [Video](#)
9. In Antarctica, bugs are kings
10. Clinton faces questions on her husband's charity | [Video](#)

[Most Popular Articles RSS Feed](#)

Reuters Deals

The global destination for corporate leaders, deal-makers and innovators



[Knowledge to Act](#)

- ▶ [Explore Northern Croatia from Sunsail's New Base in Pula](#)
- ▶ [Oracle Development Tools User Group Announces New Board of Directors](#)
- ▶ [21st Century Systems Inc. Names Scott E. Jacobs Senior Vice President and Chief, Federal Systems Group](#)
- ▶ [As Temperatures Drop, PECO Reminds Consumers of Increased Funds Available and Expanded Eligibility for Heating Aid to Help Meet Winter Energy Costs](#)
- ▶ [Senator Schumer Speaks to 4,900 AARP Members Pledging Bipartisan Action on Nation's...](#)
- ▶ [More Press Release News...](#)

Ads by Google [What's This?](#)

[Volvo C70 Liquidation](#)

All Remaining '08 Models Must Sell! See Local Volvo C70 Sale Prices
[VolvoC70.ConnectWithLife.com](#)

[FieldTurf by Conserv FS](#)

Authentic FieldTurf Synthetic Turf for Landscape, Golf, Pets and More!
[www.fieldturfdfs.com](#)

[Turf](#)

Buy Turf From \$1.25 sq ft Call On Deck Today
[www.ondecksports.com](#)

[ForeverLawn](#)

Grass without limits. Beautiful, realistic synthetic grass.
[www.ForeverLawn.com](#)

Reuters.com: [Help and Contact Us](#) | [Advertise With Us](#) | [Mobile](#) | [Newsletters](#) | [RSS](#)  | [Interactive TV](#) | [Labs](#) | [Reuters in Second Life](#) | [Archive](#) | [Site Index](#) | [Video Index](#)
Thomson Reuters Corporate: [Copyright](#) | [Disclaimer](#) | [Privacy](#) | [Professional Products](#) | [Professional Products Support](#) | [About Thomson Reuters](#) | [Careers](#)

International Editions: [Africa](#) | [Arabic](#) | [Argentina](#) | [Brazil](#) | [Canada](#) | [China](#) | [France](#) | [Germany](#) | [India](#) | [Italy](#) | [Japan](#) | [Latin America](#) | [Mexico](#) | [Russia](#) | [Spain](#) | [United Kingdom](#) | [United States](#)

Thomson Reuters is the world's largest international multimedia news agency, providing investing news, world news, business news, technology news, headline news, small business news, news alerts, personal finance, stock market, and mutual funds information available on Reuters.com, video, mobile, and interactive television platforms. Thomson Reuters journalists are subject to an Editorial Handbook which requires fair presentation and disclosure of relevant interests.

NYSE and AMEX quotes delayed by at least 20 minutes. Nasdaq delayed by at least 15 minutes. For a complete list of exchanges and delays, please [click here](#).